

**LW** LEE  
WETHERINGTON  
HOMES



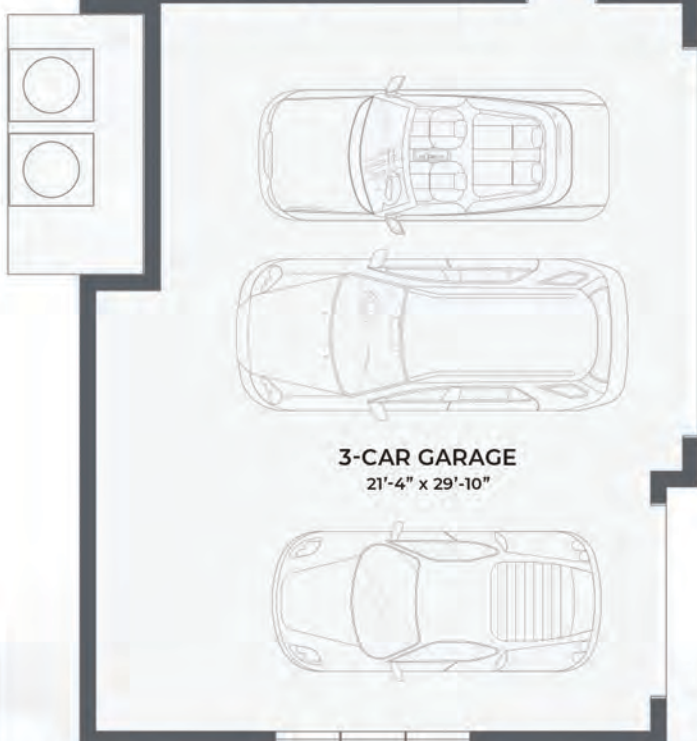
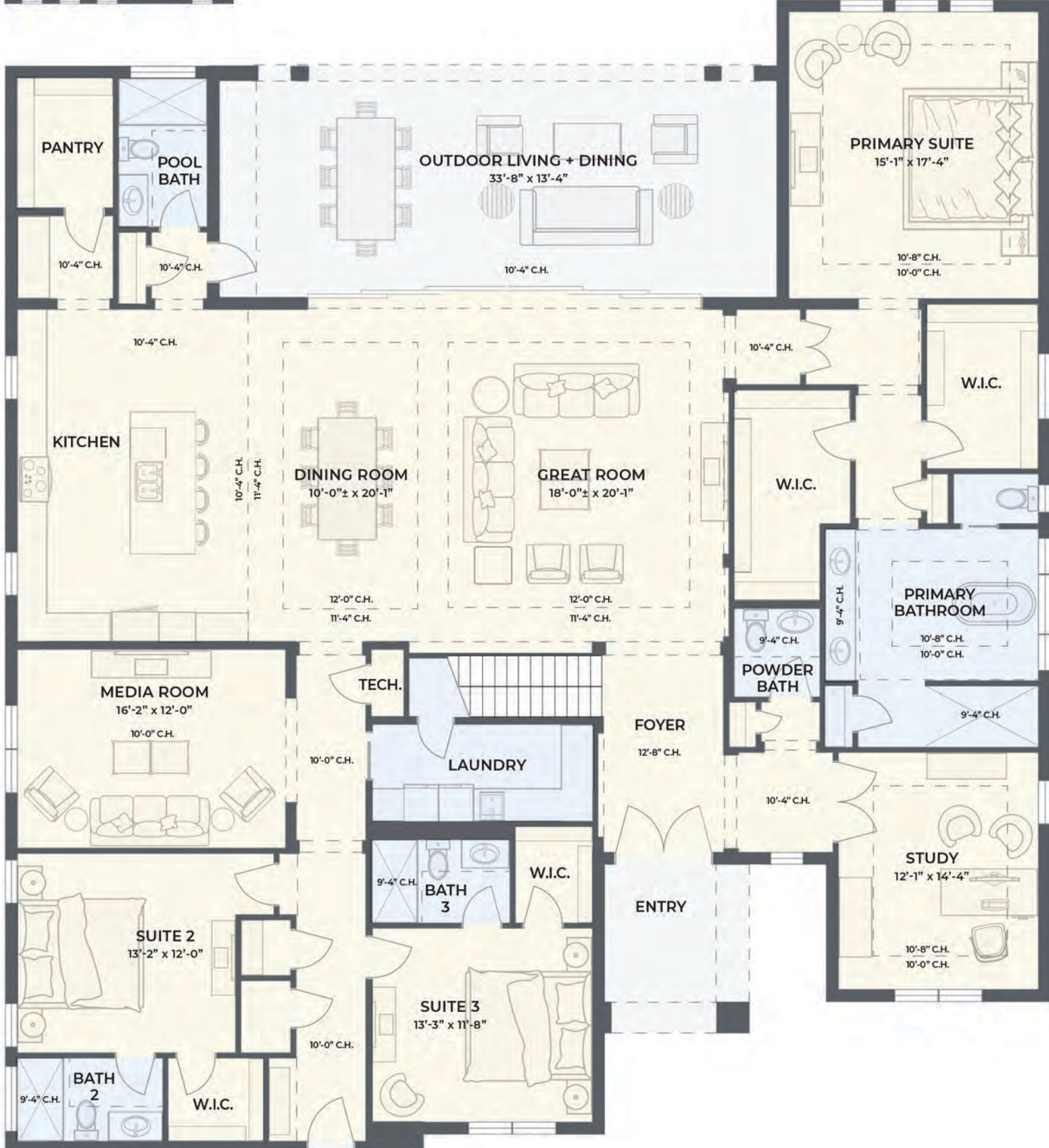
EXPERIENCE THE

*Passerelle*

2 STORY

# Passerelle

2 STORY



1st Floor Living	3,388
2nd Floor Living	682
<b>Living Area</b>	<b>4,070</b>
Outdoor Living & Dining	471
3-Car Garage	728
Entry	64

**Total Square Feet 5,333**



To learn more, simply scan this QR code with your phone.

100'0"  
63'4"



Renderings, photographs and plans are for reference purposes only. Standard ceiling height 10'0" unless noted otherwise. All dimensions are approximate. Plan is not to scale. Actual home design may vary depending on elevation and specifications. Lee Wetherington Homes reserves the right to make changes without notice. St. Cert #CGC018525



EXPERIENCE  
WHAT COULD BE

*With  
Us*

Impeccable curb appeal. Award-winning designs. Styles that spark conversations – and so much more.

For over four decades, Lee Wetherington Homes has strived to provide a tailored home building experience that aligns with the discerning taste of each and every customer on the Suncoast. We truly believe that quality is standard and consistency – a mastery of the basic elements of what makes a custom home last a lifetime – is the foundation for art. As a longtime local homebuilder, this approach to our craft is what ultimately brings to life your singular vision in the form of a bold, beautiful and incomparable custom home.



To learn more, simply scan  
this QR code with your phone.